

# Dual Stage Filter Device

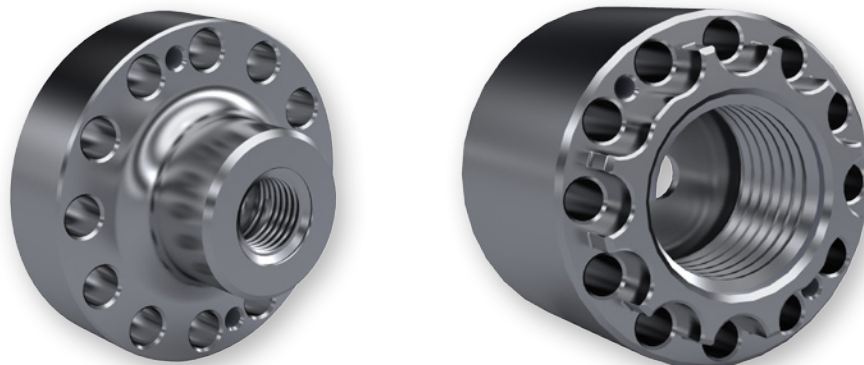
3803 Illinois Avenue  
St. Charles, Illinois 60174  
Phone: 630-443-4000  
1-800-MDI-ONLY  
www.meltdesign.com



**MDi's Dual Stage Filter Device** eliminates gate obstructions caused by contaminants that can be inadvertently introduced into the molding material. Mounted between the extruder barrel and the molding machine nozzle, our unique design works to protect critical mold components by using two separate melt stages.

- **Injection Stage** – During injection, the melt is filtered and homogenized through a series of grooves and openings that diminish in size to separate out debris as small as 0.010"Ø.
- **Decompression Stage** – During decompression, material flows freely through a separate pathway back to the molding machine barrel.

There are no springs or other internal components to "stick" or seize up, so production is smooth and uninterrupted. Easily maintained.



Adaptors for MDi's Dual Stage Filter Device are available with 7/8-14 standard thread (shown above left) or they can be machined per customer specifications to fit any molding machine (shown above right).



For more information, call 800-MDI-ONLY (800-634-6659), or visit [www.meltdesign.com](http://www.meltdesign.com).  
Outside the U.S. dial 1-630-443-4000.