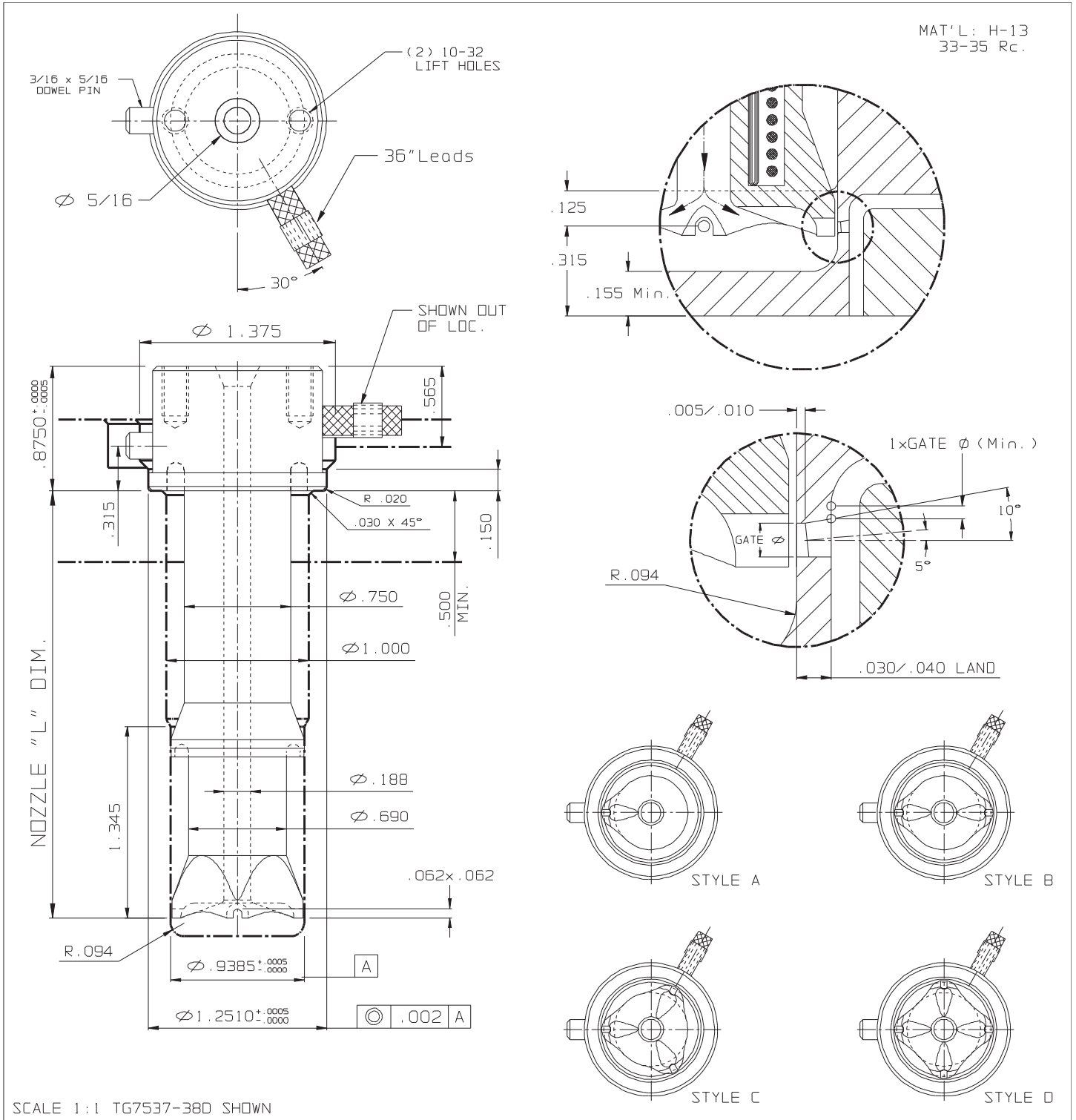


EDGE GATE (SINGLE BODY)



NOZZLE # (220 V)					THERMAL EXPANSION $\Delta L @$ (°F)				ORDERING
L	FLAT TYPE	O-RING TYPE	WATTS	T/C	370°F	460°F	550°F	640°F	
2.000	TG7527-38(#)	TG7527-68(#)	310	J2-06	0.004	0.006	0.007	0.009	When ordering, please substitute the (#) with the desired style to complete nozzle part number. Example: TG7527-38D
2.500	TG7533-38(#)	TG7533-68(#)	360	J2-06	0.005	0.007	0.009	0.011	
3.000	TG7537-38(#)	TG7537-68(#)	390	J2-06	0.006	0.009	0.011	0.013	
3.500	TG7543-38(#)	TG7543-68(#)	430	J2-06	0.007	0.010	0.012	0.015	
4.000	TG7547-38(#)	TG7547-68(#)	475	J2-10	0.008	0.011	0.014	0.016	
4.500	TG7553-38(#)	TG7553-68(#)	500	J2-10	0.009	0.013	0.016	0.018	