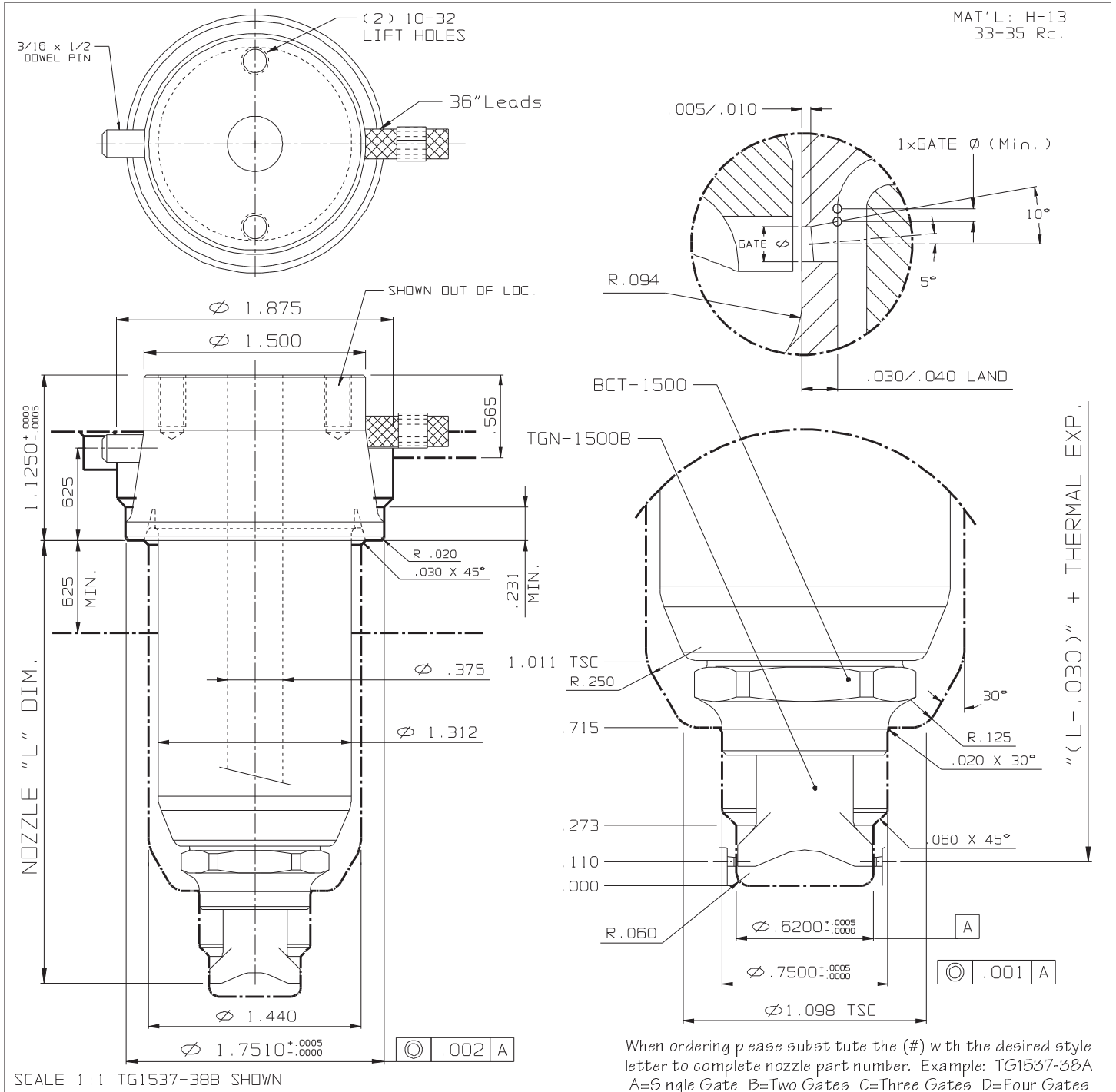


EDGE GATE (REPLACEABLE TIP)



NOZZLE #					THERMAL EXPANSION ΔL @ (°F)				OPTIONS	
L	FLAT TYPE	O-RING TYPE	WATTS	T/C	370°F	460°F	550°F	640°F	END CAP	GATE Ø
2.000	TG1527-38(#)	TG1527-68(#)	410	J2-06	0.005	0.007	0.008	0.010	BCT-1500	.030-.060
2.500	TG1533-38(#)	TG1533-68(#)	450	J2-06	0.006	0.008	0.010	0.011	GATING NEEDLES UNFILLED MAT'LS TGN-1500A TGN-1500B TGN-1500C TGN-1500D REINFORCED MAT'LS TGN-1510A TGN-1510B TGN-1510C TGN-1510D	
3.000	TG1537-38(#)	TG1537-68(#)	480	J2-06	0.007	0.009	0.011	0.013		
3.500	TG1543-38(#)	TG1543-68(#)	530	J2-10	0.008	0.010	0.013	0.015		
4.000	TG1547-38(#)	TG1547-68(#)	560	J2-10	0.009	0.012	0.015	0.017		
4.500	TG1553-38(#)	TG1553-68(#)	600	J2-10	0.010	0.013	0.016	0.019		
5.000	TG1557-38(#)	TG1557-68(#)	630	J2-10	0.010	0.014	0.018	0.021		
5.500	TG1563-38(#)	TG1563-68(#)	650	J2-10	0.011	0.016	0.019	0.023		