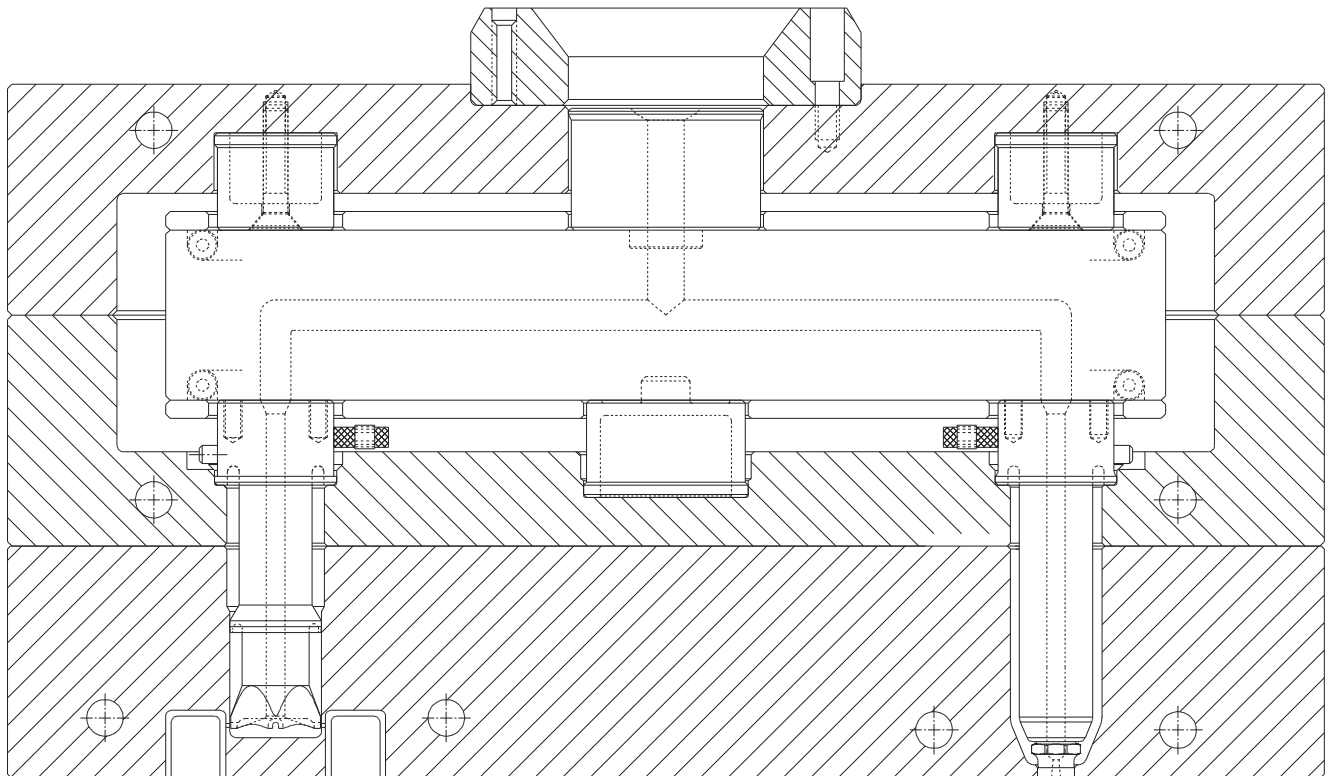


## SYSTEM OVERVIEW



After careful engineering and compiled field experience in hot runner systems, Melt Design has fully developed its Ultraflow™ Hot Manifold System. It is offered as system components, or as a completely assembled, prewired and tested, ready to bolt-on system. Unique features and advantages offer unmatched benefits to the molder and ultimately to the part user.

- One piece solid manifold
- Open pipeline flow channels, dynamically balanced by computer, insure same flow conditions for all manifold exit ports.
- Easy clean up or color changes by simply purging an open mold.
- Constructed from hardened tool steel for better heat response.
- Replaceable heating elements conveniently placed on both sides of manifold reduce mold downtime and maintenance cost.
- Existing conventional molds can be easily converted to hot runner molds for increased productivity and part quality.
- Offered as full bolt-on designs, or only the manifold and components
- Accepts all Melt Design's gating bushings listed through this catalog.
- Relatively thin manifolds for either single face or stack molds for overall thinner molds.
- Available as single face, two-shot, or multi-color hot runners.