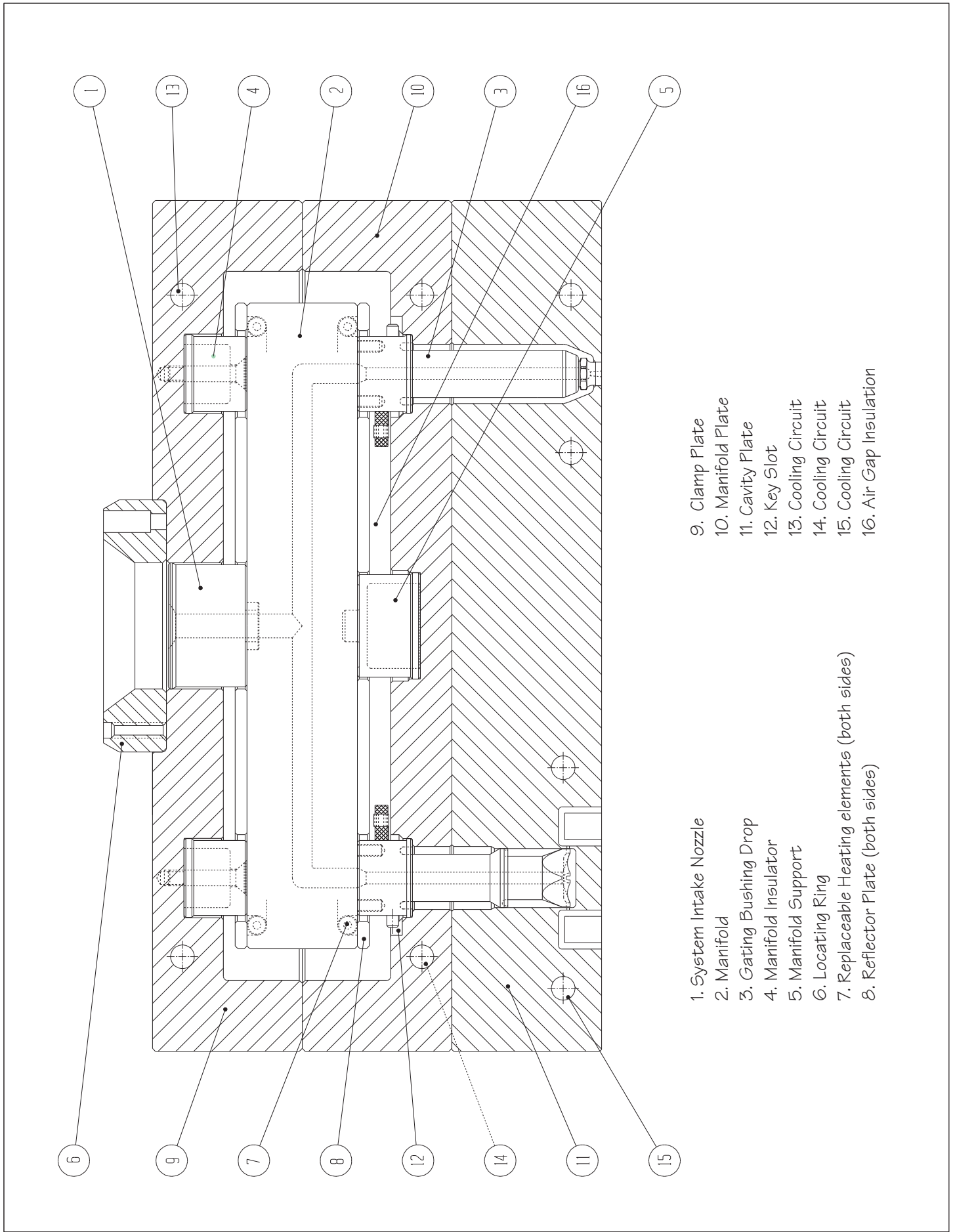


SYSTEM ELEMENTS



- 1. System Intake Nozzle
- 2. Manifold
- 3. Gating Bushing Drop
- 4. Manifold Insulator
- 5. Manifold Support
- 6. Locating Ring
- 7. Replaceable Heating elements (both sides)
- 8. Reflector Plate (both sides)
- 9. Clamp Plate
- 10. Manifold Plate
- 11. Cavity Plate
- 12. Key Slot
- 13. Cooling Circuit
- 14. Cooling Circuit
- 15. Cooling Circuit
- 16. Air Gap Insulation