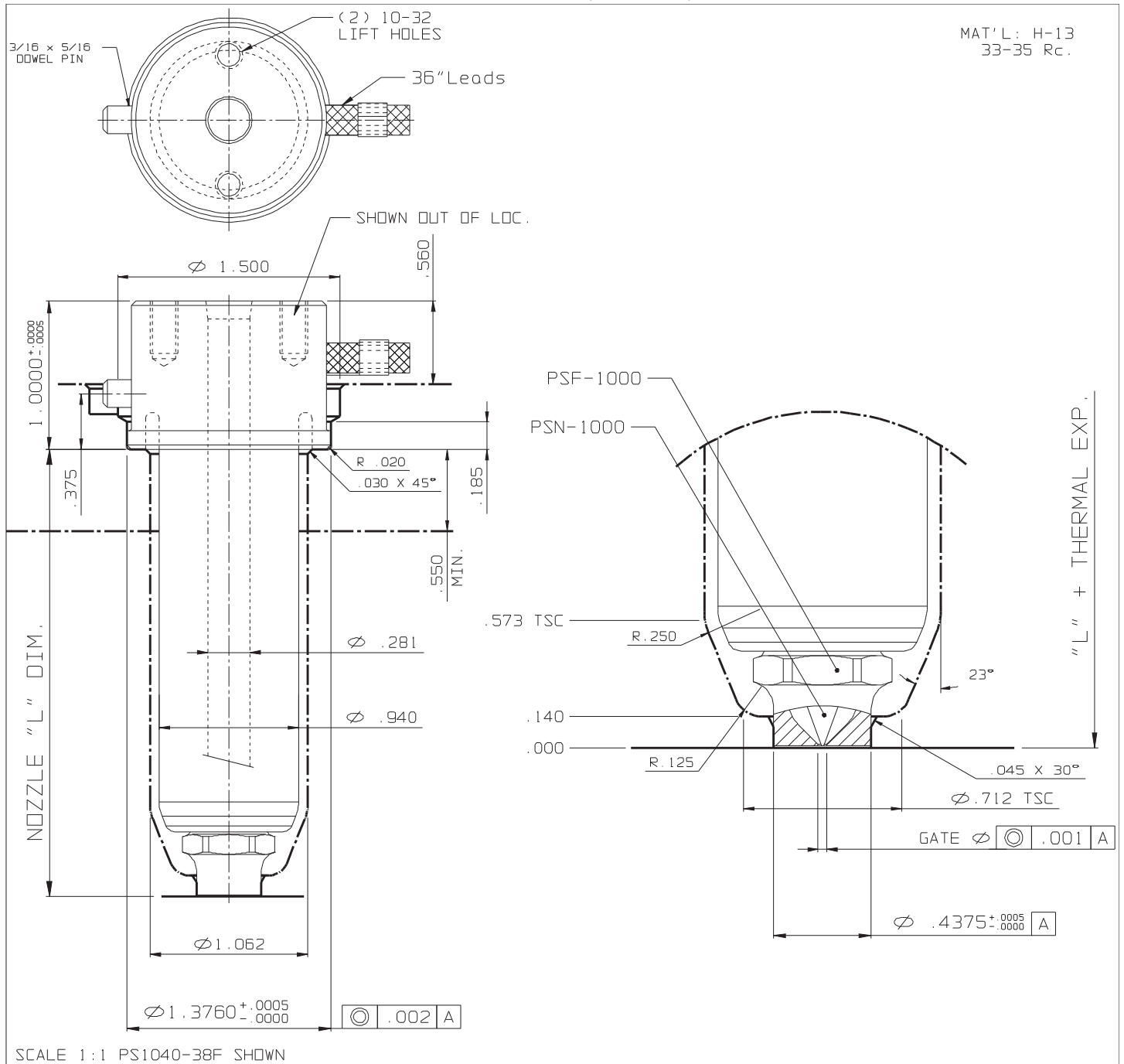


## FULL BODY (Medium)



| NOZZLE # (220V) |            |             |       |       | THERMAL EXPANSION $\Delta L$ @ (°F) |       |       |       | OPTIONS        |                    |                  |
|-----------------|------------|-------------|-------|-------|-------------------------------------|-------|-------|-------|----------------|--------------------|------------------|
| L               | FLAT TYPE  | O-RING TYPE | WATTS | T/C   | 370°F                               | 460°F | 550°F | 640°F | END CAP        | GATE $\varnothing$ |                  |
| 2.000           | PS1030-38F | PS1030-68F  | 355   | J2-06 | 0.004                               | 0.006 | 0.007 | 0.009 | PSF-1000       | .040               |                  |
| 2.500           | PS1035-38F | PS1035-68F  | 415   | J2-06 | 0.005                               | 0.007 | 0.009 | 0.011 |                |                    |                  |
| 3.000           | PS1040-38F | PS1040-68F  | 470   | J2-10 | 0.006                               | 0.009 | 0.011 | 0.013 |                |                    |                  |
| 3.500           | PS1045-38F | PS1045-68F  | 530   | J2-10 | 0.007                               | 0.010 | 0.012 | 0.015 | GATING NEEDLES | UNFILLED MATLS     |                  |
| 4.000           | PS1050-38F | PS1050-68F  | 590   | J2-10 | 0.008                               | 0.011 | 0.014 | 0.016 |                |                    | REINFORCED MATLS |
| 4.500           | PS1055-38F | PS1055-68F  | 590   | J2-10 | 0.009                               | 0.013 | 0.016 | 0.018 |                |                    |                  |
| 5.000           | PS1060-38F | PS1060-68F  | 610   | J2-10 | 0.010                               | 0.014 | 0.017 | 0.020 |                |                    |                  |
| 5.500           | PS1065-38F | PS1065-68F  | 660   | J2-10 | 0.011                               | 0.015 | 0.019 | 0.022 |                |                    |                  |
| 6.000           | PS1070-38F | PS1070-68F  | 710   | J2-10 | 0.012                               | 0.017 | 0.020 | 0.024 | PSN-1000       | PSN-1010           |                  |