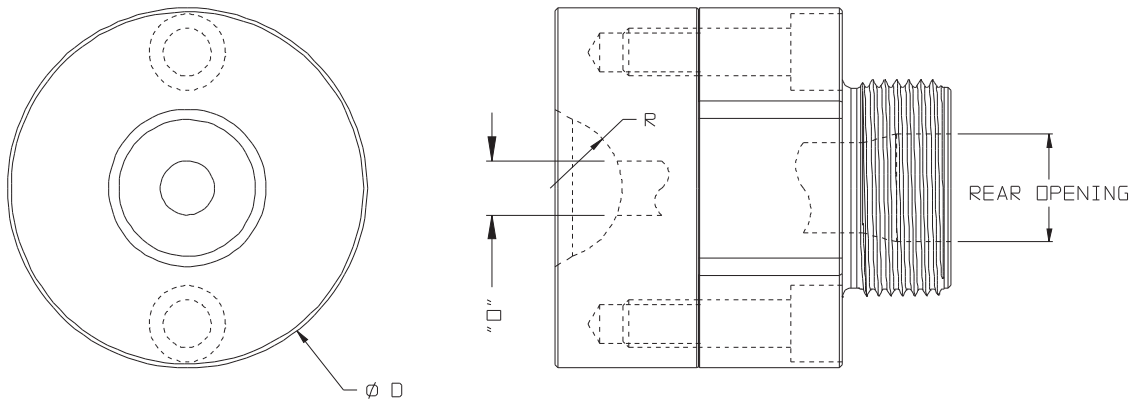


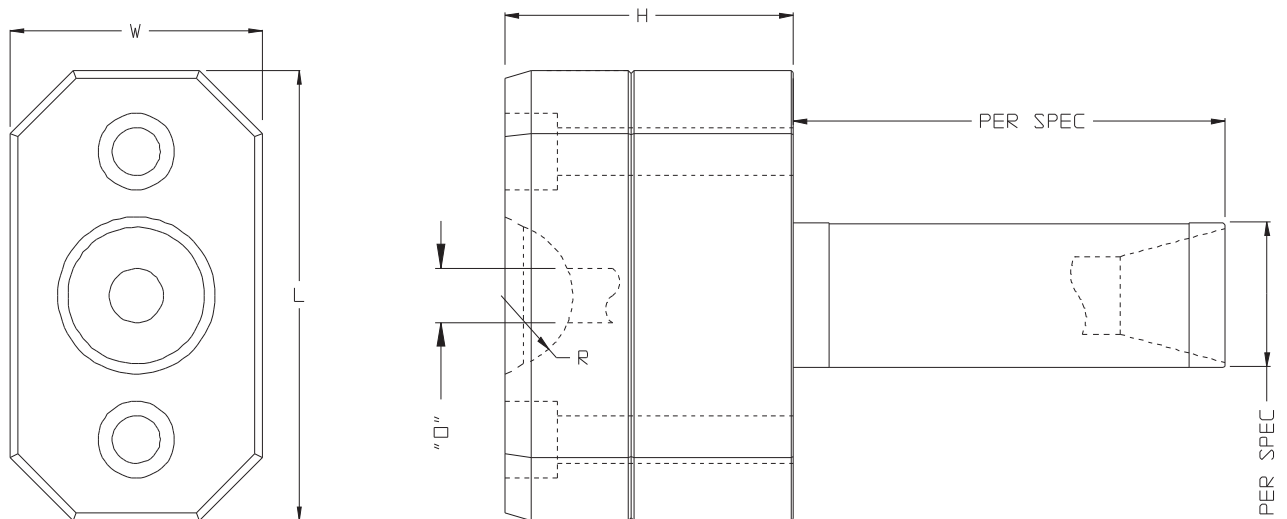
ANTI-DROOL SPRUE BAR DEVICE

- Positive shut-off
- Compact design fits onto any sprue bar
- No external moving parts
- Allows for decompression of Hot Runner System
- Uses industry standard nozzle tips

Mdi APPLICATIONS

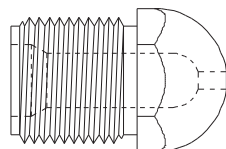


RETROFIT APPLICATIONS



PART #	APPLICATION	DESCRIPTION	RADIUS	"0"	REAR OPENING
SBSD-225	MDI	1 1/2 X 12 THREAD	1/2 OR 3/4	Ø 1/4-7/16	1/2-1"
SBSD-XXX	RETROFIT	MADE TO SUIT			

INDUSTRY STANDARD NOZZLE TIPS



RADIUS	1/4 ORIFICE	3/8 ORIFICE	7/16 ORIFICE	THREAD
1/2 R	GT-50-250	GT-50-375	GT-50-437	7/8 -14
3/4 R	GT-75-250	GT-75-375	GT-75-437	7/8 -14

Nozzle Tips also available with 1/8 and 3/16 Dia. Orifice.